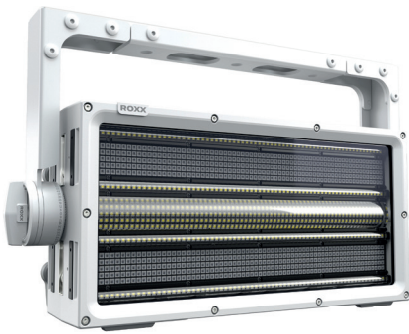
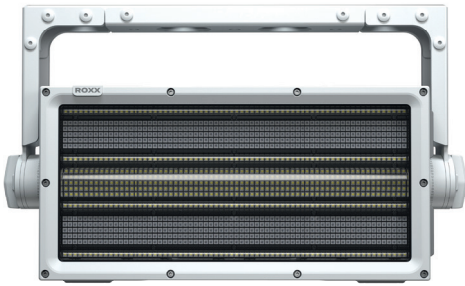


CLUSTER S2i



- High-power, pixel-mappable hybrid strobe / washlight
- Center Strobe mimics traditional look from Xenon-bulb Strobe
- Full color mixing & tuneable white with high CRI
- Four extra single Strobe lines create unique effects and give an extra boost on High-Power Strobe applications
- Large number of build-in patterns
- IP66 rated for Indoor & Outdoor use
- C5-H coated
- IK08
- UV resistant
- 5 year warranty

The CLUSTER S2i is a versatile, high-power pixel-mappable strobe & washlight engineered to meet the demands of architectural applications. Its sleek, modern design, with a durable white finish (RAL 9010) and C5-H coating, ensures it blends seamlessly into any setting, while its robust construction allows it to withstand the rigors of outdoor environments. With a 5-year warranty, the CLUSTER S2i is built for reliability and long-term use in challenging conditions.

Whether you are lighting up a stage, illuminating a building façade, or creating immersive environments, the CLUSTER S2i delivers the power, flexibility, and durability you need to make an impact.

Equipped with 612 cool white LEDs (7000K) and 680 RGB LEDs, the CLUSTER S2i delivers an impressive luminous flux of 57,750 lumens at full output (1200W), making it ideal for both vibrant light shows and architectural highlights. Its combination of CW and RGB LEDs provides a wide range of lighting effects, from pure, crisp whites to rich, dynamic colors, offering creative flexibility for designers.

The spotlight is designed to endure harsh environments, boasting an IP66 rating for water and dust protection, and an IK08 impact resistance, ensuring it stands up to the demands of outdoor installations. This rugged durability makes the CLUSTER S2i a reliable choice for long-term installations in both entertainment venues and architectural spaces.

There are several mounting options – Camlock mounts on top and back enable the use of Omega-Brackets, Yokes can be attached to M12 mounting points on all sides, or the internal C-Lok system can be used for seamless interconnection. Pre-Link Magnets on top and side help to align the fixtures and allows “one-handed” operation for secure locking.

Accessories



Pre-installed elliptical horizontal filter



Pre-installed elliptical vertical filter



Omega Bracket STi, white



Omega Bracket STi, black

Technical Data

Photometrics

LED expected lifetime	50.000 hours
Lightsource	612x CW LED's (7000K), 680x RGB LED's
Type of optical system	native, elliptical lens
LED PWM Frequency	selectable 800Hz, 1.200Hz, 2.000Hz, 3.600Hz, 12kHz, 25kHz
Beam angles @ Full (50%)	66°
Maximum Field angles @ Full (10%)	108°
Color temperature range	2000-10.000K
CRI/Ra @ Full	88
Efficacy @ Full (max)	48,07 lm/W
Luminous flux @ Full	57.750 lm (1200W)
Luminous flux @ (illumination mode)	14.807lm (305W)
Luminous flux @ Center Strobe (Boost Mode)	70.661lm (1135W)
Luminous flux @ 4x Single Strobes (Boost Mode)	35.582lm (982W)
Luminous flux @ 2x RGP Panels (Boost Mode)	22.685lm (853W)
Luminous flux @ Center Strobe (Illumination Mode)	20.260lm (300W)
Luminous flux @ 4x Single Strobes (Illumination Mode)	14.480lm (300W)
Luminous flux @ 2x RGP Panels (Illumination Mode)	7.920lm (300W)
illuminance Lux @ 3m / 9,84ft (@ Full)	4460lx / 414fcd
illuminance Lux @ 3m / 9,84ft (@ Center Strobe)	3500lx / 325fcd
illuminance Lux @ 3m / 9,84ft (@ 4x Single Strobes)	2560lx / 238fcd
illuminance Lux @ 3m / 9,84ft (@ Center Strobe + 4x Single Strobes)	4045lx / 376fcd
illuminance Lux @ 3m / 9,84ft (@ 2x RGB Panels)	1075lx / 100fcd

Thermal Characteristics

Cooling	Active, Forced Air, Temperature-regulated
Humidity (max.)	95%
Temperature range, Operating	-40°C to 45°C
Temperature range, Start-Up	-20° to 45°C
Temperature range, Storage	-40°C to 80°C
Thermal Protection	Automatic overtemperature protection

Electrical Data

AC Power, max	90 – 285V 50/60Hz
AC Power, nominal	100 – 240V 50/60Hz
Electrical protection	Overload protection with automatic recover
Max power consumption	1250W
Constant power consumption	320W
Power Max. Out	14A @ 230V / 13A @ 120V
Power Linking @ Max Power Consumption (Boost Mode)	0 unit @ 120V / 1 unit @ 230V
Power Linking @ Constant Power Consumption (Illumination Mode)	4 units @ 120V / 11 units @ 230V
Power Factor	0.998 PF (230V) / 0.997 PF (120V)
Power Supply Unit	Inbuilt auto-ranging electronic switch-mode

Technical Data

Operator & Controller	
DMX channels	15CH Simple Mode , 39CH Easy Mode, 71CH Standard Mode (default mode), 112CH Pure Mode, 209CH Pure Mode, 178CH Full Access Mode , 275CH Full Access Extended Mode
DMX modes	7
Protocol	USITT DMX512A RDM ANSI E1.20 Art-Net sACN
Operator & Controller	
Setting and addressing	OLED graphical display / 4 controls RDM ANSI E1.20
Standalone mode	Auto Program, Color Macro, Quick Color, Tunable White, User Color
Wireless DMX	n.a.
Indicator	OLED graphical display
Controls	4 touch sensitive, backlit controls
Strobe	0-30Hz
DMX I/O	PG9 cable gland with 3m cable, open end
Ethernet I/O	PG9 cable gland with sealing cap, RJ45 I/O sockets installed inside
Power In	PG11 cable gland with 3m cable, open end
USB Firmware Update	n.a.
Dimensions & Weight	
IP class	IP66
IK class	IK08
Body material	Aluminum, Nylon, Stainless Steel
Lens material	Tempered glass front
Net dimensions without Yoke (w x h x d)	400 x 200 x 191mm
Net dimensions inches	15,75 x 7,87 x 7,52 inches
Net weight (incl. Yoke)	12,6 kg (27,78lbs)
Tilt	360°
Tilt Locking System	Locking system with tooting and angle indicator
Included / Optional	
Included items	Yoke 4.1, Puk
Optional Accessories	Multiple in-built filters, Yoke 2.2, Yoke 4.3, Yoke Floor Extension, Rigging Bracket, Omega Bracket STi
Color options	White – RAL 9010 C5H coated (Standard) / Custom color – any RAL (on request)
Installation	
Mounting point by Yoke (included)	3x 13mm / 1/2" holes, 1x centric TV Spigot attachment
Mounting point on fixture	M10 Omega Bracket on top and rear side
Mounting point with optional Rigging Bracket	2x 13mm / 1/2" holes for Clamp fixation
Orientation	Any
Rigging possibilities	Hanging or ceiling / pendant mount
Safety features	2x rear mount for safety wire
Minimum distance from flammable materials	0,3 meters (11,8 inch)

Order Number

CLUSTER	
S2i	13305202
Accessories	Order Number
Pre-installed elliptical horizontal filter	13907824
Pre-installed elliptical vertical filter	13907924
Omega Bracket STi white	90900025
Omega Bracket STi black	90900026

