

NEO Lite

Battery Installation Instruction

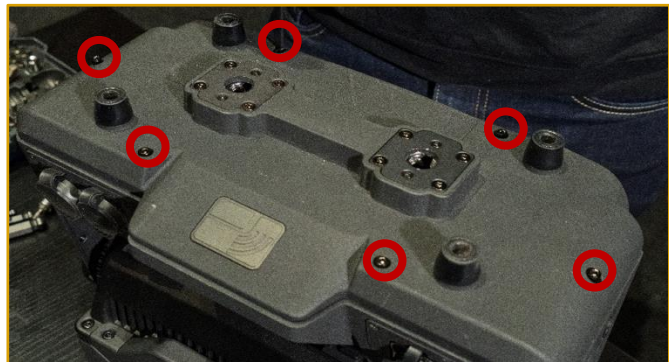
Before you begin:

- Carefully read the entire guide to ensure full understanding of all steps.
- Follow the steps in the exact order presented. Do not alter the sequence.
- Disconnect the fixture from any power before starting.
- Avoid damaging or short-circuiting the battery, this may cause fire or explosion.
- Choose a safe installation location to minimize risk in case of malfunction.
- Familiarize yourself with emergency actions in case of fire.

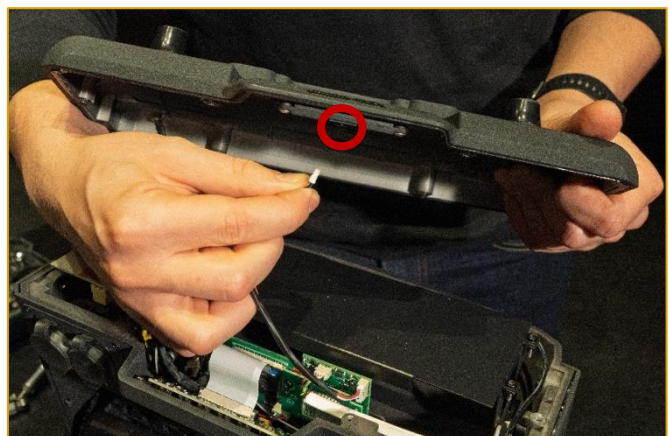
Tools required:

- SW 3 Allen wrench
- Torx T10 screwdriver

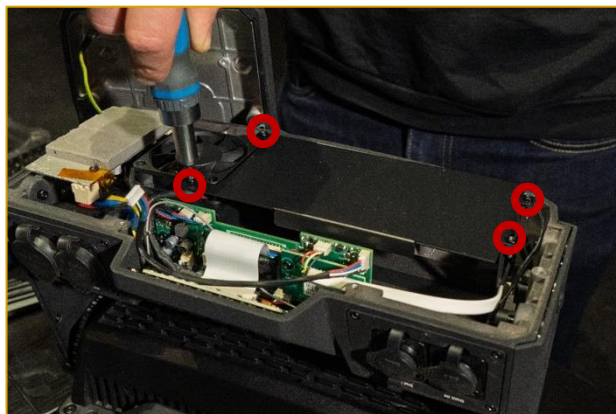
1. **Unscrew the 6 Allen screws** using the SW 3 Allen wrench as shown in the image.



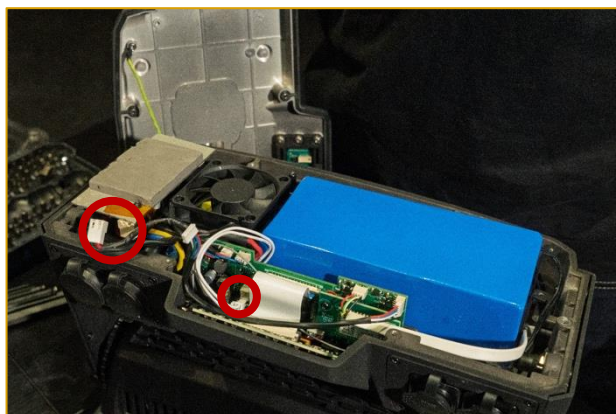
2. **Open the fixture carefully and disconnect the NFC sensor.** Place the backplate to one side, keeping the grounding cable connected.



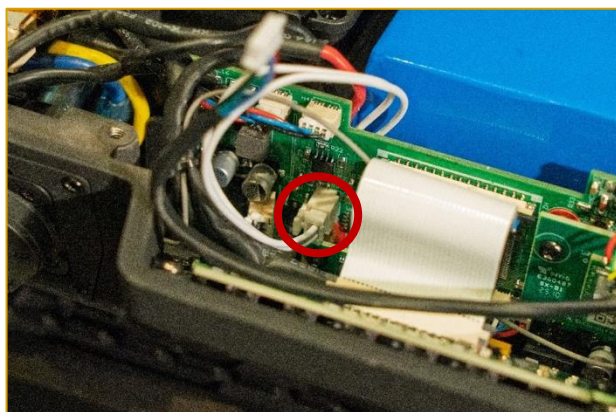
3. **Remove the 4 screws** with the Torx T10 screwdriver and **remove the cover.**



4. **Place the battery**, ensuring that both cables are oriented toward the **fan and display board.**



5. **Connect the white cable** to the display board.



6. **Connect the battery power cable** to the shown port.



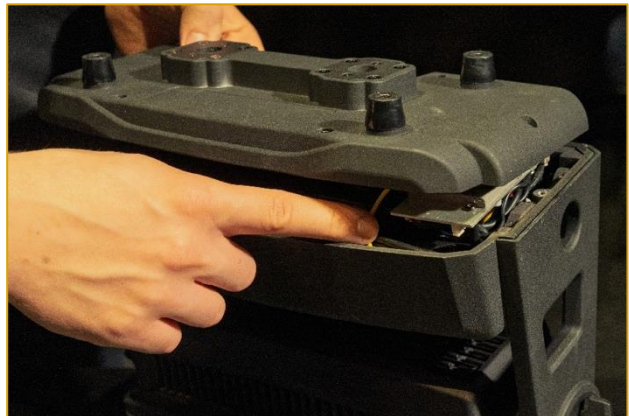
7. **Reattach the cover** and tighten the screws securely. Check that the battery is in place and can't move.



8. **Reconnect the NFC sensor.**



9. **Close the bottom plate** of the fixture. Ensure the grounding cable is not pinched or damaged.



10. **Power up the fixture** with mains voltage. Do a factory reset by pressing [ESC] + [ENTER] and 2x [ENTER]. Now the fixture shows battery related entries in the menu.